



# MENS SLIMLINE PANT FB70113

Flat front and tapered through the leg. Waistband with stretch fusing. Internal security pocket on right front pocket, and two rear pockets.

## DETAILS



### COOL STRETCH

92% Polyester 8% Bamboo Charcoal

Versatile and durable suiting fabric. Breathable fabric perfect for warmer climates keeping you cool and dry. Mechanical stretch for extra comfort and anti-bacterial finish to eliminate odour.

### Fabric care instruction:

- Trousers - Warm or cold machine wash. Wash with similar colours. Do not bleach, soak or tumble dry. Line dry in shade. Warm iron. Recommend dry clean 30°C.



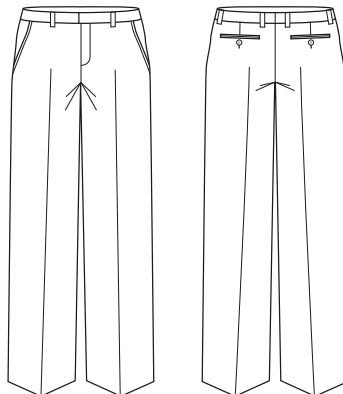
## COLOURS



## GARMENT MEASUREMENTS

SIZE	72R	77R	82R	87R	92R	97R	102R	107R	112R
1/2 WAIST (CM)	36	38.5	41	43.5	46	48.5	51	53.5	56

## SPEC DRAWING



ALL MEASUREMENTS ARE APPROXIMATE AND ARE FOR REFERENCE ONLY. COLOURS ARE REPRODUCED AS CLOSELY AS PRINTING ALLOWS.